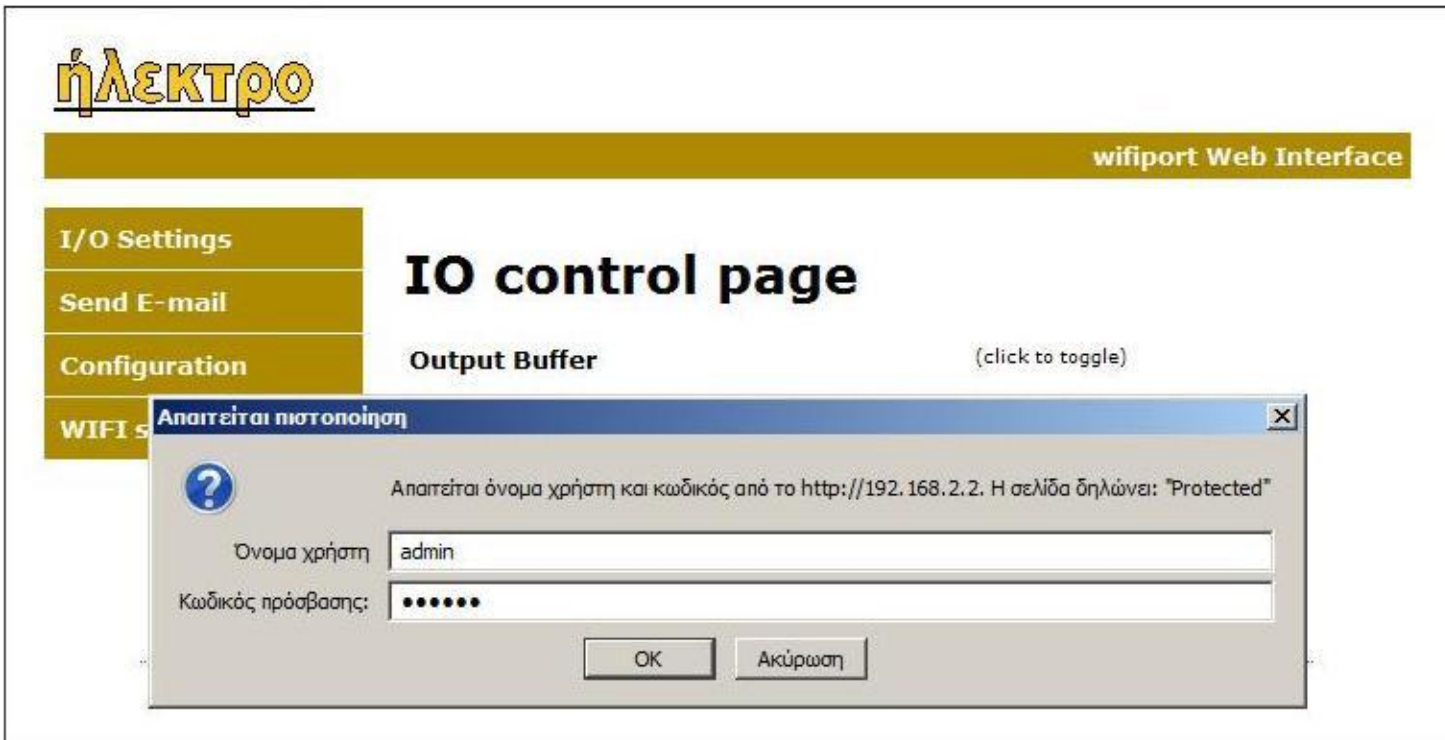


Start screen and I/O control of web interface



Authentication page .User name: admin default password: 123456



Send E-mail page.

I/O Settings

Send E-mail

Configuration

WIFI setup

Send E-Mail

By combining the SMTP client into an HTTP2 POST callback, a form can be developed that sends an e-mail to an administrator.

Enter the appropriate settings in the fields below:
(Your SMTP server may not require a user name or password.)

SMTP Server:	<input type="text"/>	Port:	<input type="text" value="25"/>
User Name:	<input type="text"/>		
Password:	<input type="text"/>		
To:	<input type="text"/>		
Message:	<pre>This message was sent by the Netport TCP/IP Stack. See the attached file for current system status information. The attached CSV file will open in any spreadsheet program.</pre>		
	<input type="button" value="Send Message"/>		

Net configuration page

ήΛΕΚΤΡΟ wifiport Web Interface

I/O Settings **Board Configuration**

Send E-mail

Configuration

WiFi setup

This page allows the configuration of the board's network settings.

CAUTION: Incorrect settings may cause the board to lose network connectivity.

Enter the new settings for the board below:

firmware version:	<input type="text" value="3.1"/>
MAC Address:	<input type="text" value="00:1E:C0:09:04:A0"/>
NETBIOS Name:	<input type="text" value="WIFIPORT0504A0"/>
	<input checked="" type="checkbox"/> Enable DHCP
IP Address:	<input type="text" value="192.168.2.2"/>
Gateway:	<input type="text" value="192.168.2.1"/>
Subnet Mask:	<input type="text" value="255.255.255.0"/>
Primary DNS:	<input type="text" value="192.168.2.1"/>
Secondary DNS:	<input type="text" value="0.0.0.0"/>
Host IP:	<input type="text" value="192.168.2.2"/> 0.0.0.0 = server
Host-server port:	<input type="text" value="1200"/> 1024-65535
local port:	<input type="text" value="0"/> 0-65535 (0 = auto)
Serial Baud rate:	<input type="text" value="115200"/>
I/O Config:	1 <input type="text" value="OUTPUT"/> 2 <input type="text" value="OUTPUT"/> 3 <input type="text" value="OUTPUT"/> 4 <input type="text" value="OUTPUT"/> 5 <input type="text" value="OUTPUT"/> 6 <input type="text" value="OUTPUT"/> 7 <input type="text" value="OUTPUT"/> 8 <input type="text" value="OUTPUT"/> 9 <input type="text" value="OUTPUT"/> 10 <input type="text" value="OUTPUT"/> 11 <input type="text" value="OUTPUT"/> 12 <input type="text" value="OUTPUT"/> 13 <input type="text" value="OUTPUT"/> 14 <input type="text" value="OUTPUT"/>
	<input type="button" value="Save Config"/> <input type="button" value="Restore"/>

user name:	<input type="text" value="admin"/>
enter password:	<input type="password" value="*****"/>
reenter password:	<input type="password" value="*****"/>
	<input type="button" value="Save username/password"/>

Wireless configuration page

ήλεκτρο

wifiport Web Interface

I/O Settings

Send E-mail

Configuration

WIFI setup

WIFI setup

This page allows the configuration of the board's wifi connection settings.

CAUTION: Incorrect settings may cause the board to lose network connectivity.

Enter the new settings for the board below:

firmware version:	<input type="text" value="0.1"/>
MAC Address:	<input type="text" value="00:1E:C0:05:04:A0"/>
NETBIOS Name:	<input type="text" value="WIFIPORT0504A0"/>
SSID:	<input type="text" value="WiFiPort"/>
Channel Selection:	<input type="text" value="Auto"/>
Encryption:	<input type="text" value="Disabled"/>
Encryption key:	<input type="text"/>
	<input type="button" value="Save"/> <input type="button" value="Restore"/>

Copyright © 2012 ήλεκτρο

After save configuration or save username/password.

ήλεκτρο

wifiport Web Interface

I/O Settings

Send E-mail

Configuration

WIFI setup

Reboot In Progress...

Your settings were successfully saved, and the board is now rebooting to configure itself with the new settings.

Your board is now located at: <http://0.0.0.0/>

Reconnection Instructions

- 1. Did you change the hostname?**
You should be able to access your board by clicking the link above.
- 2. Did you change the MAC address?**
The DHCP server probably assigned the board a new IP address, but your computer's network cache has saved the wrong address. From the command prompt in Windows, enter "nbtstat -R" to clear old values, then try the link above.
- 3. Did you try the IP address?**
Try accessing the board directly at the IP address shown on the LCD screen. (ex: enter "http://192.168.5.23/" into your browser). If this fails, then the IP address you set is not reachable. Try the step below.
- 4. Still not working?**
You can restore compile-time settings by clearing the board's EEPROM. Hold BTNO (right most button on PICDEM.net™ 2 and Explorer 16) and press MCLR. Continue holding BTNO until the LEDs flash. Release BTNO and press MCLR again. This procedure restores the configuration settings in TCPIPConfig.h. You'll be able to access the board as you did when first connecting. See the Microchip TCP/IP User's Guide distributed with the stack for instructions. (If you are using an MPLAB ICD2 or MPLAB REAL ICE™ in debug mode, MCLR will not work and you'll need to reset the board via the MPLAB IDE.)