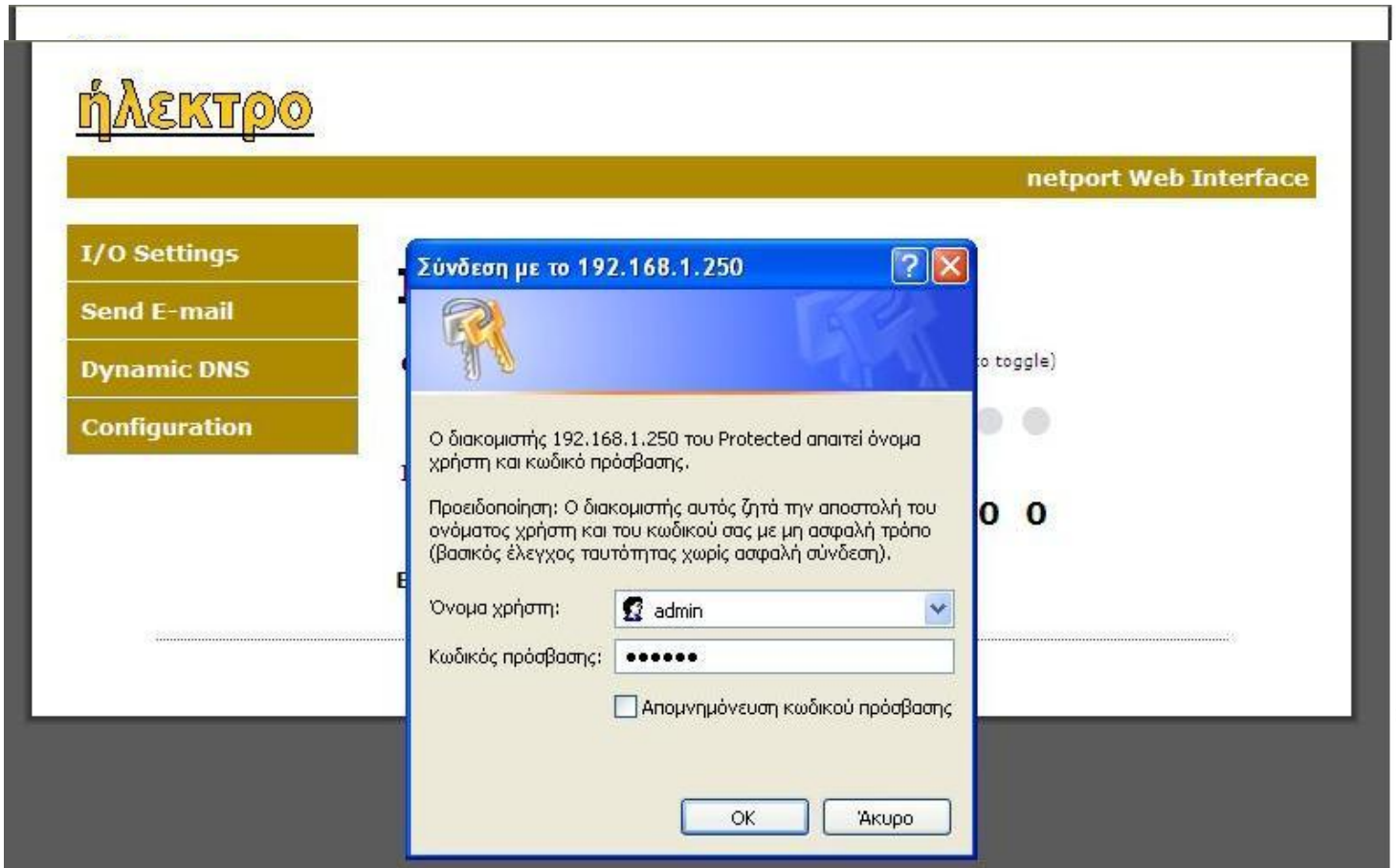



Start screen and I/O control of web interface



Authentication page .User name: admin default password: 123456

Dynamic DNS.

Send E-mail page.



netport Web Interface


- I/O Settings
- Send E-mail**
- Dynamic DNS
- Configuration

Send E-Mail

Your message has been sent.

ERROR: Your message could not be sent.
Check your SMTP server settings and try again.

By combining the SMTP client into an HTTP2 POST callback, a form can be



netport Web Interface

- I/O Settings
- Send E-mail
- Dynamic DNS**
- Configuration

Dynamic DNS

The current configuration is not valid.

The Dynamic DNS module allows the stack to update the board's global IP address to various Dynamic DNS services. This feature, along with proper port forwarding in place at the router, can enable global access to a device behind a NAT router or firewall.

Enter the settings in the fields below:

DDNS Service:

User Name:

Password:

Host:

Copyright © 2011 ήλεκτρο

Configuration page.

I/O Settings	<h1>Board Configuration</h1>
Send E-mail	This page allows the configuration of the board's network settings.
Dynamic DNS	CAUTION: Incorrect settings may cause the board to lose network connectivity.
Configuration	Enter the new settings for the board below:

firmware version:

MAC Address:

Host Name:

Enable DHCP

IP Address:

Gateway:

Subnet Mask:

Primary DNS:

Secondary DNS:

Host IP: 0.0.0.0 = server

Host-server port: 1024-65535

local port: 0-65535 (0 = auto)

Serial Baud rate:

I/O Config:

1 <input type="text" value="OUTPUT"/>	2 <input type="text" value="OUTPUT"/>
3 <input type="text" value="OUTPUT"/>	4 <input type="text" value="OUTPUT"/>
5 <input type="text" value="OUTPUT"/>	6 <input type="text" value="OUTPUT"/>
7 <input type="text" value="OUTPUT"/>	8 <input type="text" value="OUTPUT"/>
9 <input type="text" value="OUTPUT"/>	10 <input type="text" value="OUTPUT"/>
11 <input type="text" value="OUTPUT"/>	12 <input type="text" value="OUTPUT"/>
13 <input type="text" value="OUTPUT"/>	14 <input type="text" value="OUTPUT"/>

user name:

enter password:

reenter password:

After save configuration or save username/password.

ήλεκτρο

netport Web Interface

I/O Settings

Send E-mail

Dynamic DNS

Configuration

Reboot In Progress...

Your settings were successfully saved, and the board is now rebooting to configure itself with the new settings.

Your board is now located at: <http://192.168.1.250/>

Reconnection Instructions

- 1. Did you change the hostname?**
You should be able to access your board by clicking the link above.
- 2. Did you change the MAC address?**
The DHCP server probably assigned the board a new IP address, but your computer's network cache has saved the wrong address. From the command prompt in Windows, enter "nbtstat -R" to clear old values, then try the link above.
- 3. Did you try the IP address?**
Try accessing the board directly at the IP address shown on the LCD screen. (ex: enter "http://192.168.5.23/" into your browser). If this fails, then the IP address you set is not reachable. Try the step below.
- 4. Still not working?**
You can restore compile-time settings by clearing the board's EEPROM. Hold BTNO (right most button on PICDEM.net™ 2 and Explorer 16) and press MCLR. Continue holding BTNO until the LEDs flash. Release BTNO and press MCLR again. This procedure restores the configuration settings in ICPIPConfig.h. You'll be able to access the board as you did when first connecting. See the Microchip TCP/IP User's Guide distributed with the stack for instructions. (If you are using an MPLAB ICD2 or MPLAB REAL ICE™ in debug mode, MCLR will not work and you'll need to reset the board via the MPLAB IDE.)

Copyright © 2011 ήλεκτρο